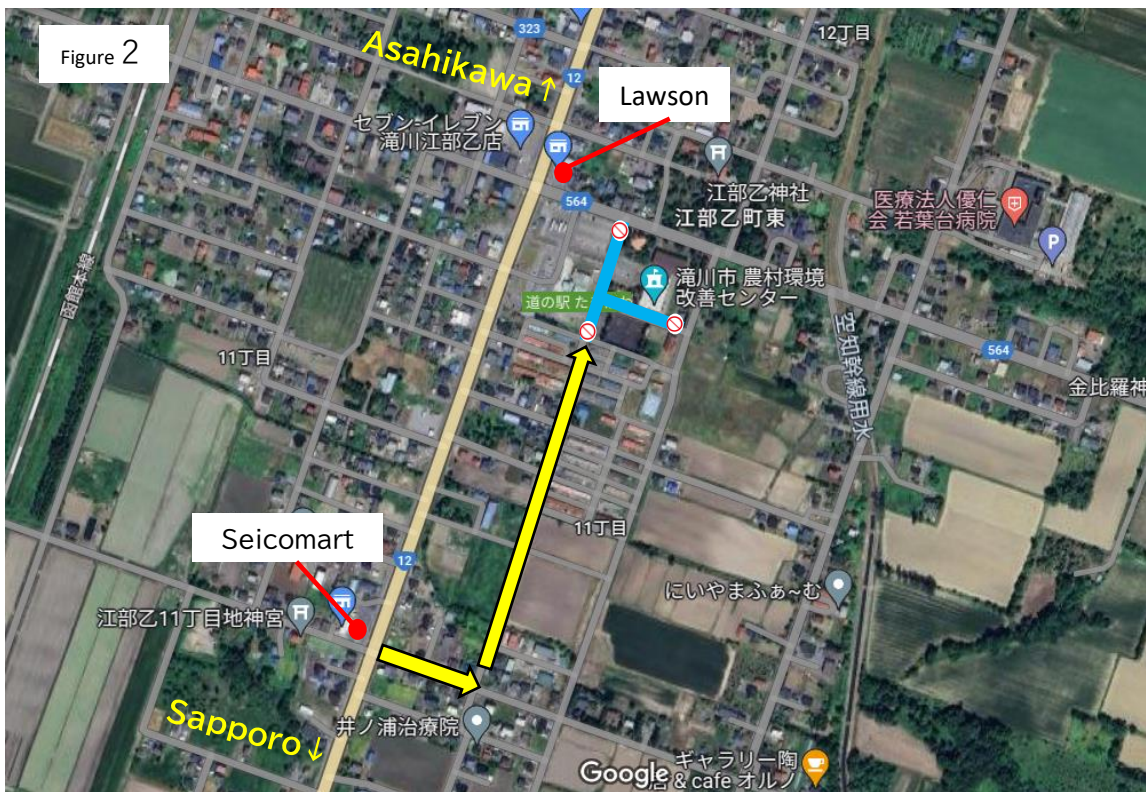
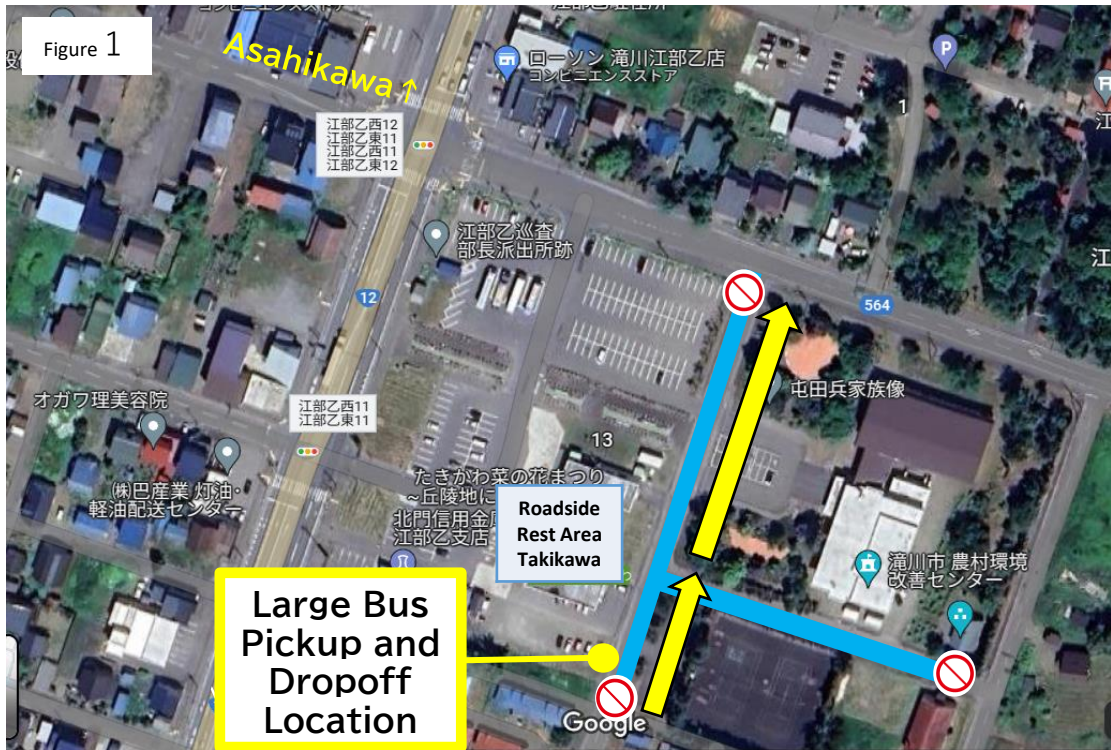


Roadside Rest Area Takikawa Large Bus Pickup and Drop Off Location



※Please contact the Canola Flower Festival Committee Office at least 2 days prior to your visit. You will be asked for the date of your visit, your company’s name, the number of buses requested, your party’s arrival time, your contact information, and the organizer’s name.

※The roads surrounding Roadside Rest Area Takikawa are expected to be very crowded. **We recommend taking the detour depicted in Figure 2 even if you are coming from the direction of Asahikawa.** Closed roads will be used by the Canola Flower Busses operated by the Festival Committee, so we ask that large tour busses follow the yellow arrow depicted in Figure 1 when departing.

Contact: Takikawa Canola Flower Festival Committee Office 0125 – 23 – 0030(Takikawa Tourism Association)